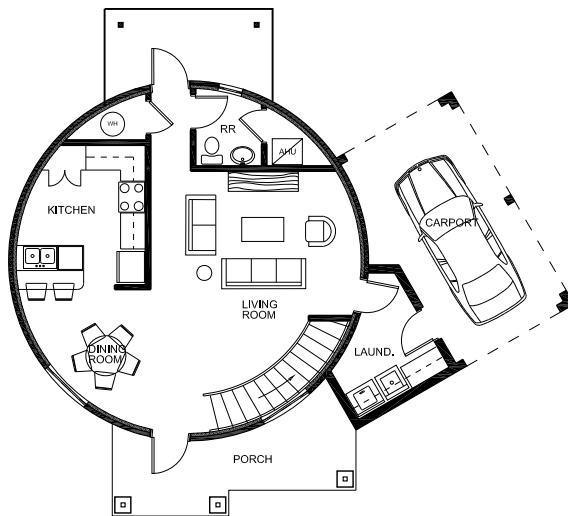




**FRONT ELEVATION**



**1st FLOOR PLAN**

**DESIGN FEATURES**

**SIZE:** LIVING AREA -- FIRST FLOOR 795, SECOND FLOOR 707, TOTAL LIVING AREA: 1,502 SQUARE FEET; GARAGE 232, FRONT PORCH 134, TOTAL UNDER ROOF: 1,868 SQUARE FEET.

**SIZE OPTION:** ADD BASEMENT OR THIRD FLOOR 707, TOTAL LIVING AREA WITH OPTIONAL BASEMENT OR THIRD FLOOR: 2,209 SQUARE FEET.

**ROOMS:** FIRST FLOOR – OPEN DINING AND LIVING ROOM, KITCHEN WITH PANTRY, LAUNDRY ROOM, HALF-BATH. SECOND FLOOR -- MASTER BEDROOM WITH WALK-IN CLOSET, TWO BEDROOMS, BATHROOM.

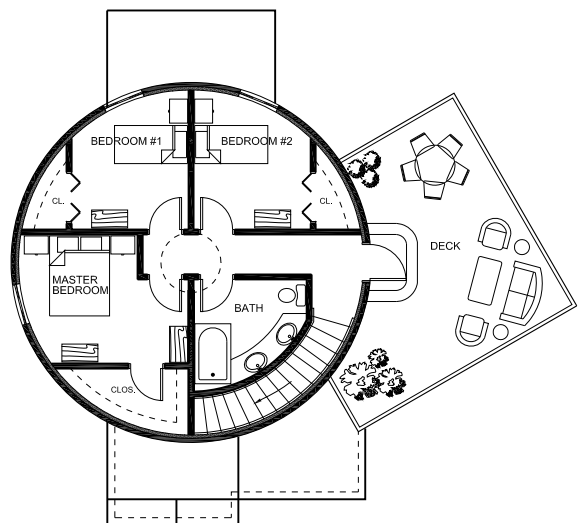
**OUTSTANDING FEATURES:** SKYLIGHT, SPACIOUS DECK AND STRONG EXTERIOR WALLS.

**DESIGN DETAILS**

**CEILINGS:** 9 FEET 6 INCHES ON THE FIRST FLOOR; 8 FEET 2 INCHES TO 8 FEET 9 INCHES ON THE SECOND FLOOR.

**DIMENSIONS:** 47 FEET WIDE BY 36 FEET 4 INCHES DEEP.

**CONSTRUCTION:** POURED CONCRETE FOR ROUND STRUCTURE AND ROOF; CONCRETE BLOCK FOR THE LAUNDRY ROOM. WOOD FRAME FOR INTERIOR WALLS.



**2nd FLOOR PLAN**

