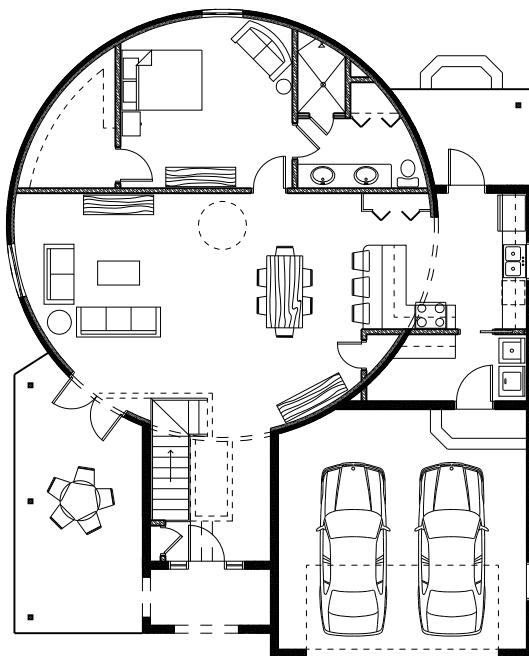




**FRONT ELEVATION**



**1st FLOOR PLAN**

**DESIGN FEATURES**

**SIZE:** LIVING AREA – FIRST FLOOR 1,328, BASEMENT 1,143, TOTAL LIVING AREA 2,471 SQUARE FEET; GARAGE 450, FRONT ENTRY 56, REAR PORCH 78; TOTAL UNDER ROOF 3,055 SQUARE FEET.

**ROOMS:** FIRST FLOOR -- FOYER, OPEN DINING AND LIVING ROOM, KITCHEN WITH PANTRY, LAUNDRY ROOM, MASTER SUITE WITH WALK-IN CLOSET, MASTER BATH. BASEMENT: TWO BEDROOMS, BATHROOM, LIVING ROOM, STORAGE, & OPTIONAL BAR.

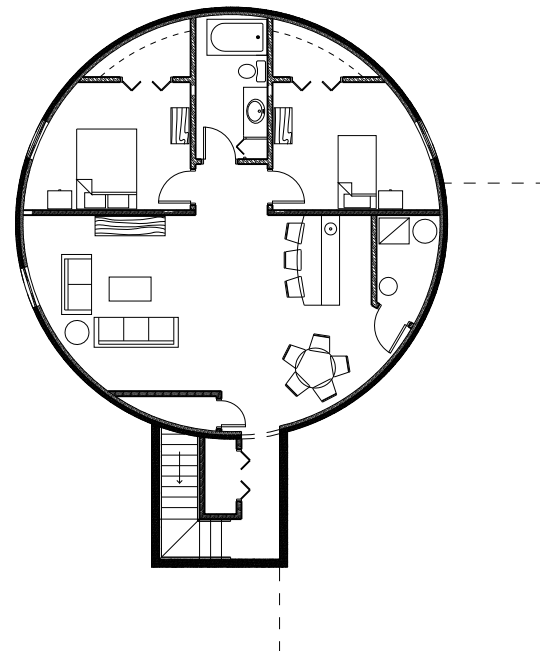
**OUTSTANDING FEATURES:** SKYLIGHT, STRONG EXTERIOR WALLS CONSTRUCTED WITH NON-COMBUSTIBLE MATERIAL (POURED CONCRETE).

**DESIGN DETAILS**

**CEILINGS:** 8 FEET 1 INCHES TO 10 FEET 2 INCHES ON THE FIRST FLOOR; 8 FEET 1 INCHES ON THE BASEMENT FLOOR

**DIMENSIONS:** 43 FEET 4 INCHES WIDE BY 54 FEET DEEP.

**CONSTRUCTION:** POURED CONCRETE FOR ROUND STRUCTURE AND ROOF; CONCRETE BLOCK FOR THE GARAGE AND FOYER. WOOD FRAME FOR INTERIOR WALLS.



**BASEMENT FLOOR PLAN**